

The image features a background of intense, bright orange and yellow flames rising from a dark surface, likely a grill. The flames are dynamic and textured, filling most of the frame. In the upper left, there is a white, rounded rectangular area containing the brand name 'Arenath' in a large, bold, black serif font. Below it, the words 'MODULAR BROIL' are written in a smaller, black, all-caps sans-serif font.

Arenath
MODULAR BROIL

Ärenath

MODULAR BROIL



Ärenath Modular Broil is a prefabricated barbecue made of low density refractory concrete, composed by modules that will allow you to assemble your barbecue, adaptable to different spaces, tastes and needs.

Ärenath Modular Broil is exceptionally resistant to high temperatures and extreme weather conditions, making it the ideal option for outdoor use.

Ärenath Modular Broil is fully washable and can be moved or reinstalled countless times thanks to its modular system. Ärenath Modular Broil has 4 different modules: dishwasher, counters, barbecue and cooker hood. These modules can be configured in 8 different positions. Its design and finishes in concrete, stainless steel and tempered glass makes it a decorative element, besides functional.

Arenath MODULAR BROIL

Main Features

- *Modular barbecue*
- *Adaptable to any area*
- *High temperature resistant*
- *High quality finishes*
- *2 year guarantee*



Arenath

MODULAR BROIL

Fact Sheet

MATERIALS	TEMPERATURE	WASH
<i>Structure:</i> <i>Refractory concrete</i> <i>Grill: Stainless steel</i>	<i>Maximum operation temperature (TMO):</i> <i>1250 °C / 2280 °F</i> <i>TMO: XC / XF</i>	<i>Water and soap or apply degreaser.</i> <i>DO NOT APPLY SOLVENTS OR PAINT REMOVERS.</i>



Module 1 features: (Dishwasher)

W: (80 cm / 31,5 in) approx.

H: (90 cm / 35,5 in) approx.

L: (65 cm / 25,5 in) approx.

Weight: (121 kg / 266,75 lb) approx.

Material: Ready-mixed refractory concrete.

Dishwasher system size and features:

W: (45 cm / 17,7 in) approx.

H: (45 cm / 17,7 in) approx.

Single lever chrome mixing faucet.

ABS 3 inch drain system.

Includes: Base module, cooktop, dishwashing sink with drain system, mixing faucet, single lever, and shelf.



Ärenath

MODULAR BROIL

Counter module

Module 3 features: (Counter module)

W: (80 cm / 31,5 in) approx.

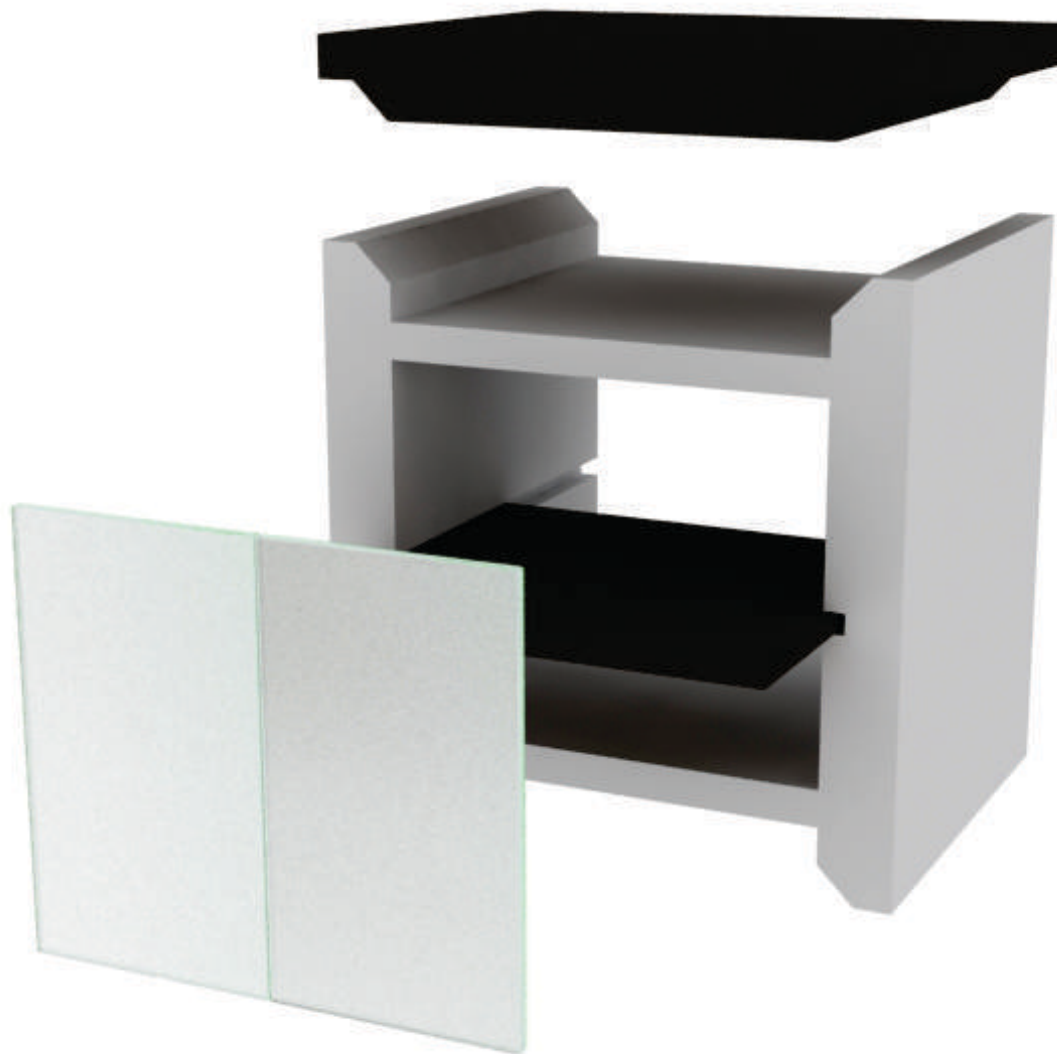
H: (90 cm / 35,5 in) approx.

L: (65 cm / 25,5 in) approx.

Weight: (136 kg. / 299,82 lb) approx.

Material: Hormigón pre-mezclado refractario.

Includes: Base module, cooktop and shelf.



Ärenath

MODULAR BROIL

Module 4 features: (cooker hood)

*Cooker hood with pulling system on pressure difference.
Lighting system of 110V or 240V.
Tempered glass display.*

W: (80 cm / 31,5 in) approx.

H: (102 cm / 40 in) approx.

L: (71 cm / 28 in) approx.

Weight: 107 kg / 236 lb) approx.

Material: Ready-mixed refractory concrete.

Module 2 features: (Barbeque and grill module)

W: (80 cm / 31,5 in) Approx.

H: (104 cm / 41 in) Approx.

L: (80 cm / 31,5 in) Approx.

Weight: (164 kg. / 361,5 lbs) Approx.

Material: Ready-mixed refractory concrete.

Stainless steel collection tray, and shelf.

Includes: Base module, Grill, cooktop and shelf.

Cooker hood



Arenath

MODULAR BROIL

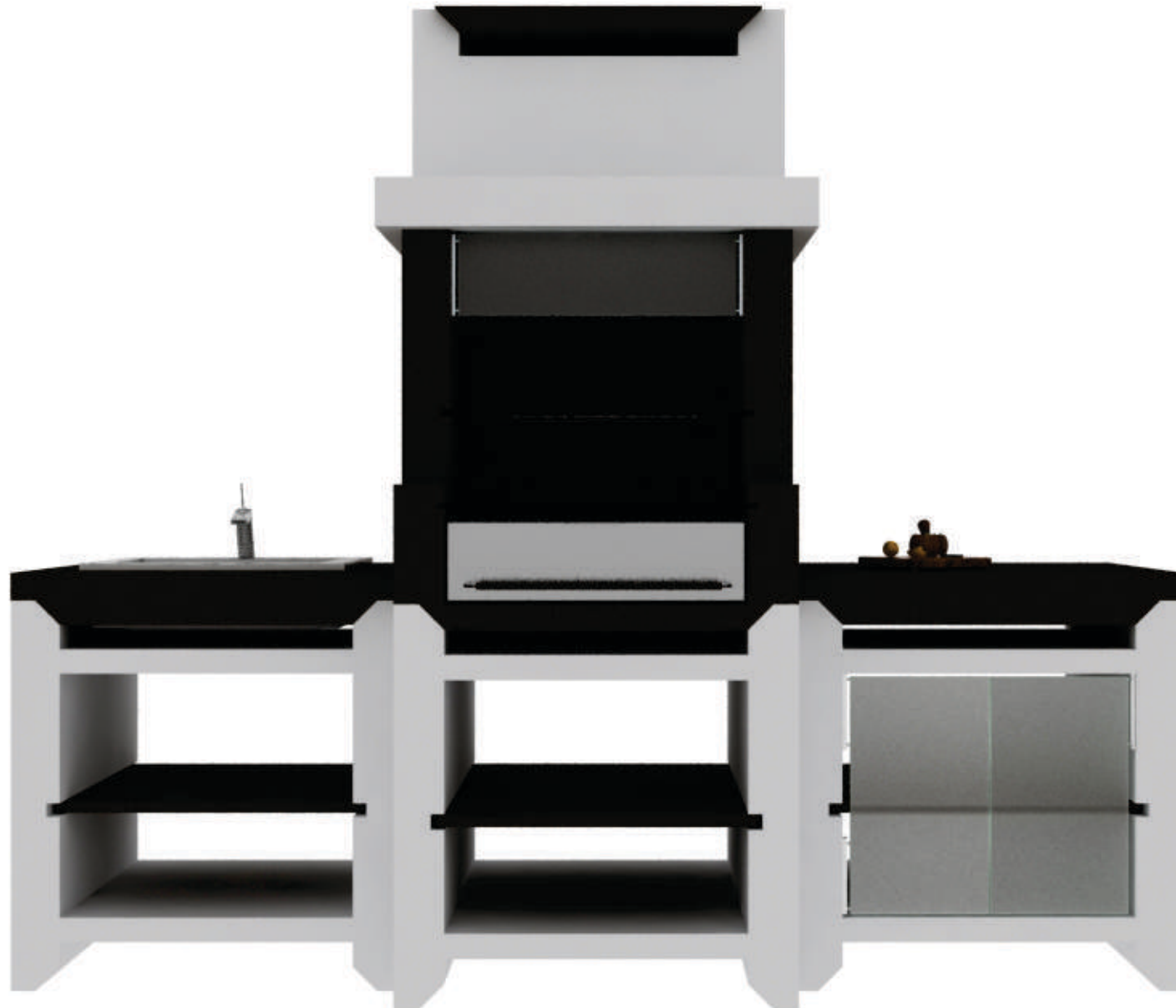
SIDE VIEW



Arenath

MODULAR BROIL

FRONT VIEW





Ärenath
MODULAR BROIL



Ärenath
MODULAR BROIL

Ärenath

MODULAR BROIL





Ärenath
MODULAR BROIL



Ärenath
MODULAR BROIL



Ärenath
MODULAR BROIL



Ärenath
MODULAR BROIL

...A masterpiece!



Arenath
MODULAR BROIL



Ärenath
MODULAR BROIL